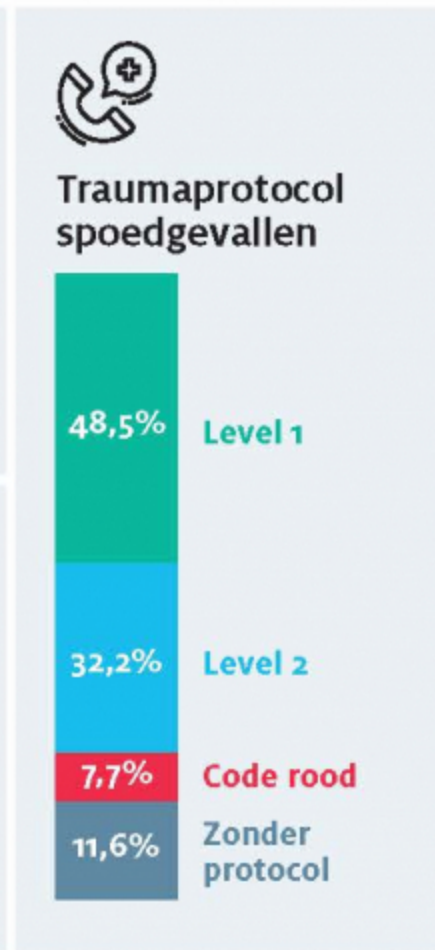
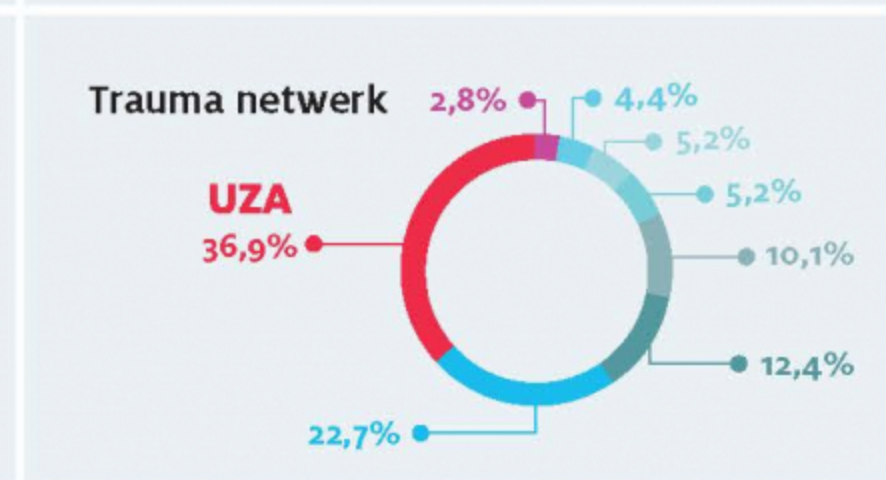
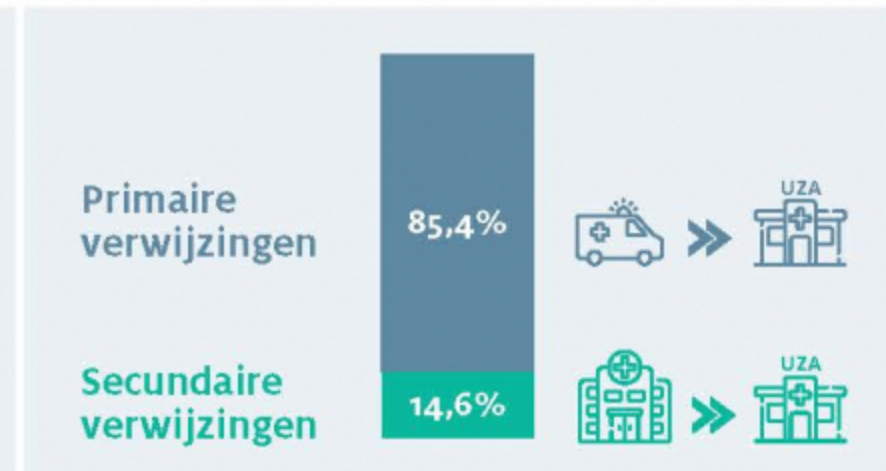
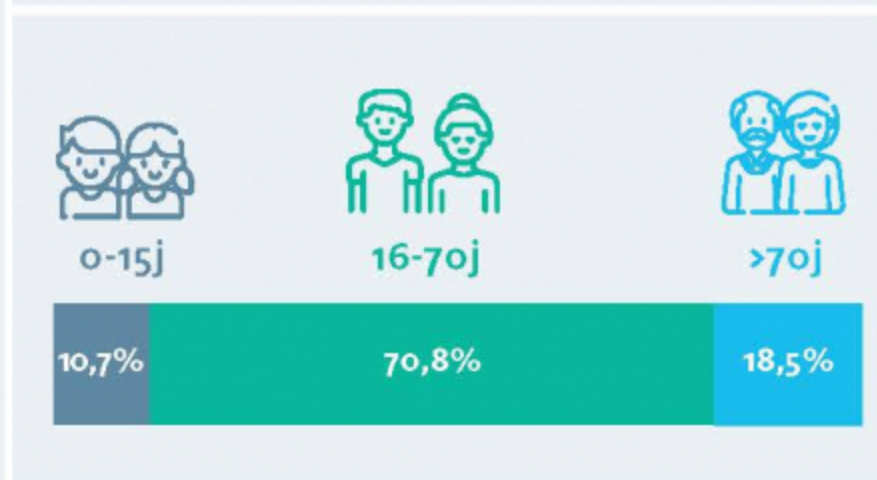
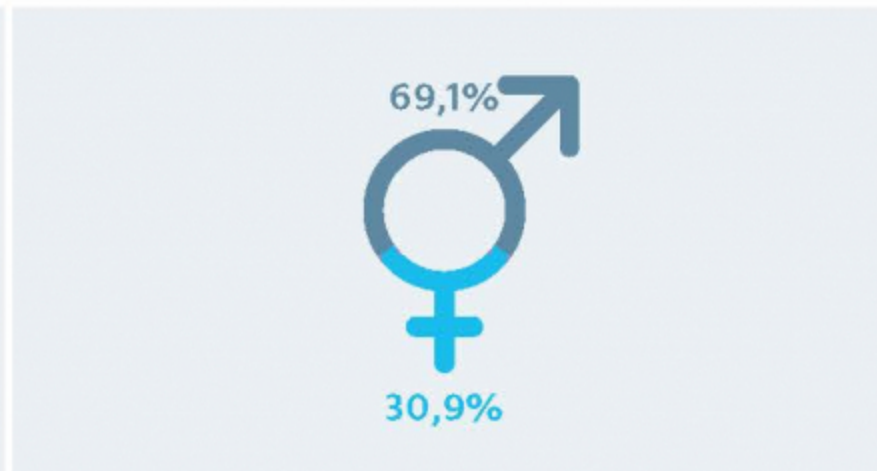
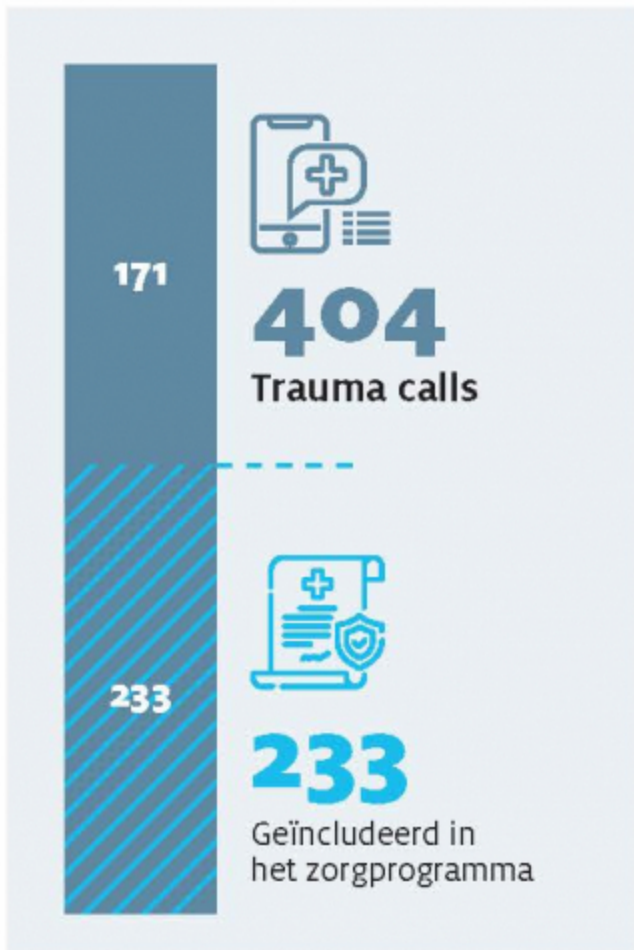
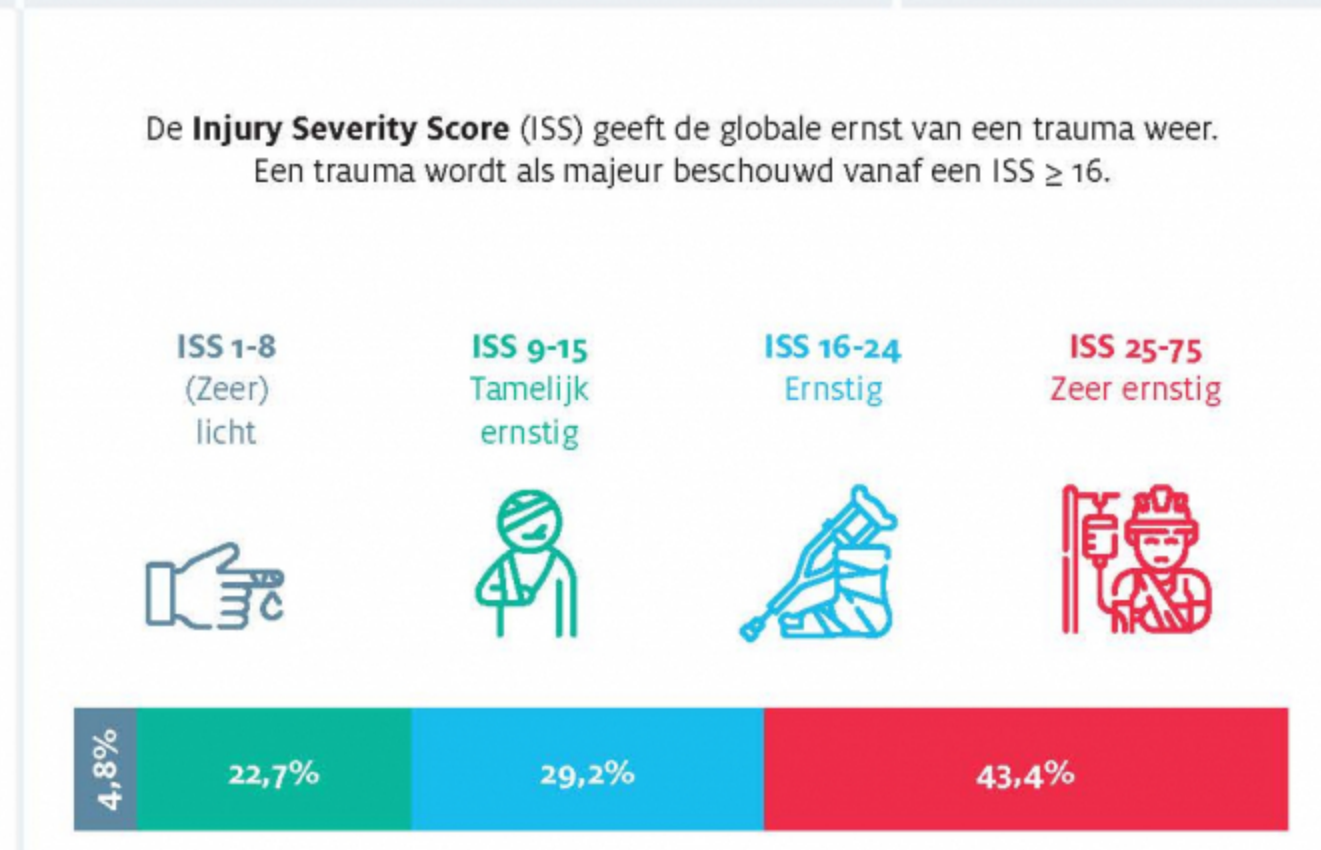
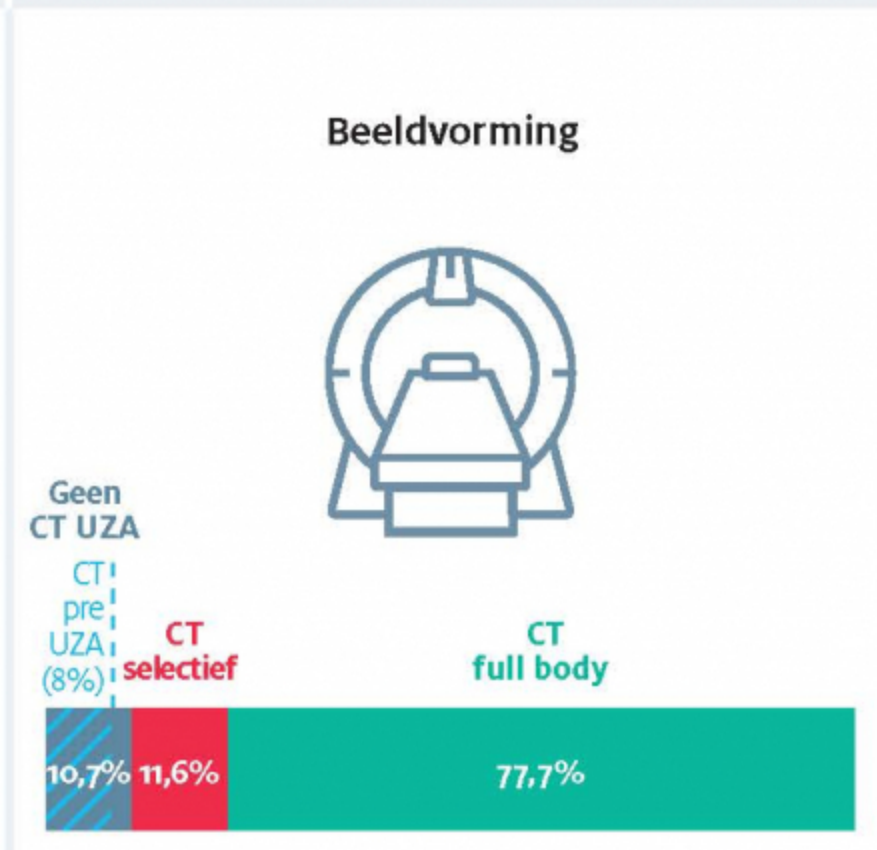
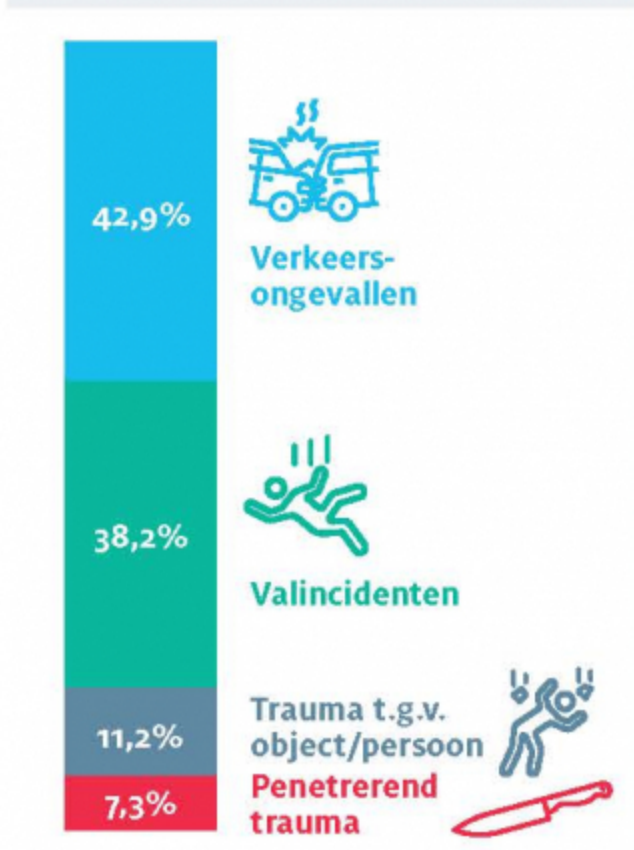


MAJOR TRAUMA SERVICE 2020

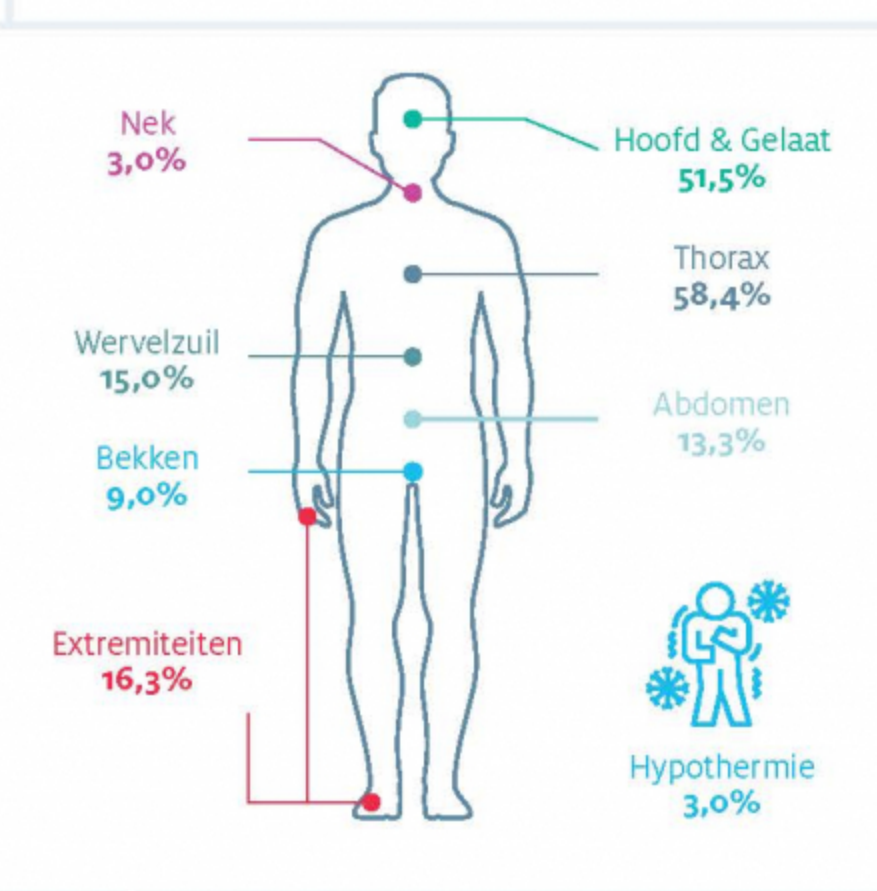
POPULATIE



LETSELS



Letselernst wordt per lichaamsregio bepaald volgens de **Abbreviated Injury Scale (AIS)**. Een letsel wordt als majeur beschouwd vanaf een AIS \geq 3.



Rechtstreeks naar de OK zonder CT: 5

Urgente ingreep < 2u na acute opvang	Aantal
Liquordrainage/decompressie	28
Externe fixatie extremiteiten	19
Laparotomie	12
Externe fixatie bekken	7
Embolisatie	7
Thoracotomie	6
Laminectomie	1

OUTCOME

